

STAINLESS STEEL INSTALLATION GUIDE

TOOLS REQUIRED FOR INSTALLATION



ELECTRIC DRILL &
DRILL BIT



SPIRIT LEVEL



CORDLESS
SCREWDRIVER & CROSS POINT
SCREWDRIVER
(BIT PH2)



METRIC RULER



HAMMER



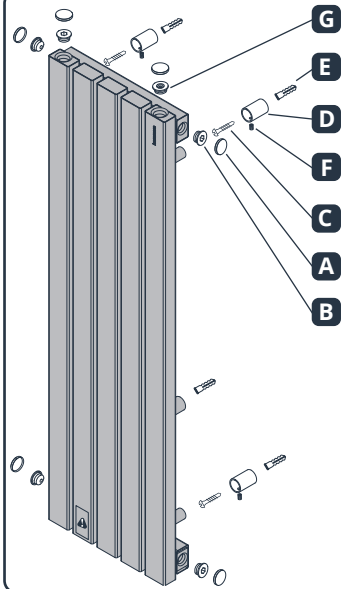
STEP LADDER
(FOR HIGH PRODUCTS)



ALLEN KEY

hammam

DESIGN RADIATOR



Installation information in this section
includes below products

ARES, NORTE, RAMSEY

CONTENT OF MOUNTING SET

Decorative Cap (x6)
Only for mirror finished products

A

Blind Plug (x5)

B

Wall Mounting
Screw (x4)

C

Wall Mounting
Bracket (x4)

D

Wall plug (x4)

E

Setscrew (x4)

F

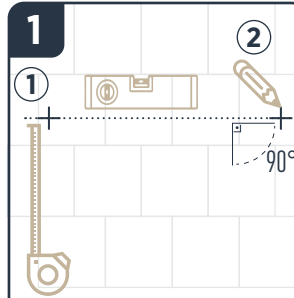
Air Vent (x1)

G

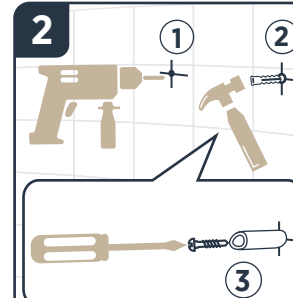
Diverter (x1)

H

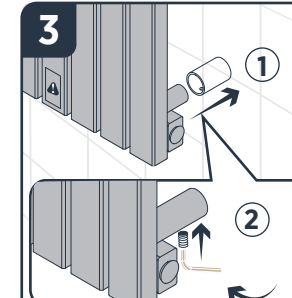
INSTALLATION



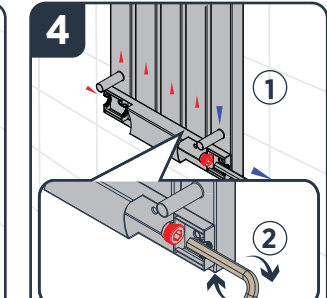
1- Adjust the height of your radiator by using a metric ruler.
2- Set the location of your radiator as desired, align with the ground by using a spirit level and mark the position of the wall mounting brackets.



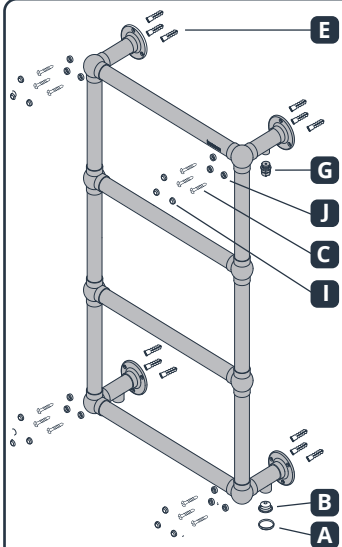
1- Drill holes (Ø 10 mm) into the spots you have marked.
2- Nail the wall plugs (E) in the holes by using a hammer.
3- Screw the wall mounting brackets all the way into the holes with the help of a screwdriver.



1- Place your radiator into the wall mounting brackets (D).
2- Insert the setscrews (F) into the slots on the mounting brackets (D), adjust the distance between the wall and your radiator then tighten the setscrews by using an Allen key (M3).



1- Insert the diverter (H) into the tube where the outlet valve is located then push until it reaches the metal sheet inside the tube.
2- Screw the diverter onto the metal sheet by using an Allen Key (M10).



Installation information in this section
includes below products

BIANCA, UNO, MALIBU

CONTENT OF MOUNTING SET

Decorative Cap (x1)
Only for mirror finished products

A

Blind Plug (x1)

B

Wall Mounting
Screw (x12)

C

Wall Plug (x12)

E

Air Vent (x1)

G

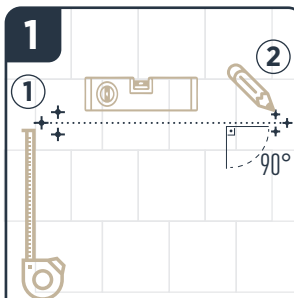
Screw Cap
Holder (x12)

J

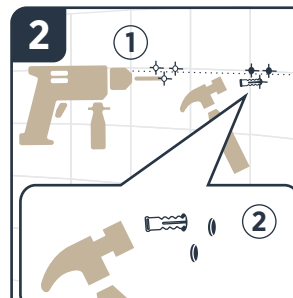
Screw cap (x12)

I

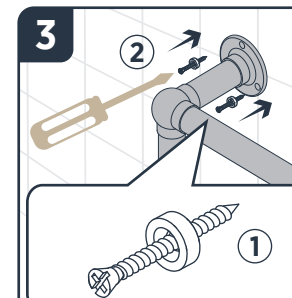
INSTALLATION



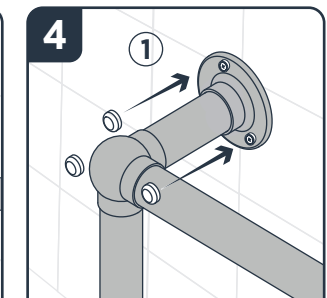
1- Adjust the height of your radiator by using a metric ruler.
2- Set the location of your radiator as desired, align with the ground by using a spirit level and mark the position of the wall mounting brackets.



1- Drill holes (Ø 10 mm) into the spots you have marked.
2- Nail the wall plugs (E) in the holes by using a hammer.



1- Pass the wall mounting screws (C) through the screw cap holders (J).
2- Place your radiator on the wall and screw the mounting brackets all the way into the wall with the help of a screwdriver.



1- Attach the screw caps (I) to the screw cap holders (J) on the wall mounting brackets.



WARNING

- Place your radiator at least 12.5 cm above the floor.
- Provide insulation by wrapping PTFE tape on the threads before installing the valves.
- Apply silicone seal fluid to all threaded parts containing o-rings.
- Connect your radiator to the pipework after following all the installation steps in the manual.
- After connecting to the pipework, do not forget to discharge the trapped air inside the radiator.

www.hammamradiator.com.tr

OSB 25. Cad. No:4 Eskişehir - Türkiye
Telefon : 0 222 236 90 11 Faks : 0 222 236 90 12



20.02.2020 Rev:05
R.EYS.KK.00108



R.EYS.KK.00108

R.EYS.KK.00108_installation_guide_stainless_steel_set3-4_english_hammam