

STEEL INSTALLATION GUIDE

TOOLS REQUIRED FOR INSTALLATION



ELECTRIC DRILL &
DRILL BIT



SPIRIT LEVEL



CORDLESS
SCREWDRIVER
(BIT PH2) & CROSS POINT
SCREWDRIVER



METRIC RULER



HAMMER



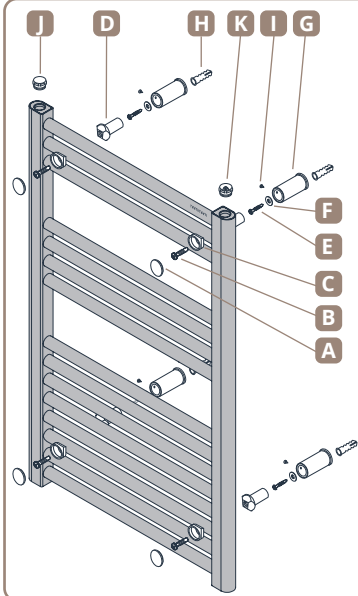
STEP LADDER
(FOR HIGH PRODUCTS)



ALLEN KEY

hammam

DESIGN RADIATOR



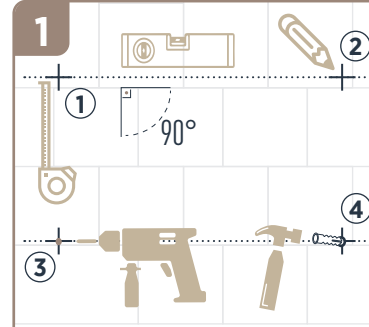
Installation information in this section
includes below products

ALYA, DORLION

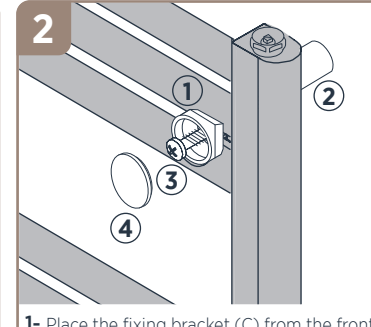
CONTENT OF MOUNTING SET

Bracket Cap (x4) A	Crosshead Screw (x4) B	Fixing Bracket (x4) C
Sliding Bracket (x4) D	Wall Mounting Screw (x4) E	Washer (x4) F
Wall Mounting Bracket (x4) G	Wall Plug (x4) H	Bracket Screw (x4) I
Blind Plug (x1) J	Air Vent (x1) K	

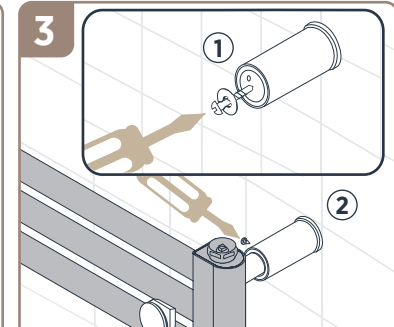
INSTALLATION



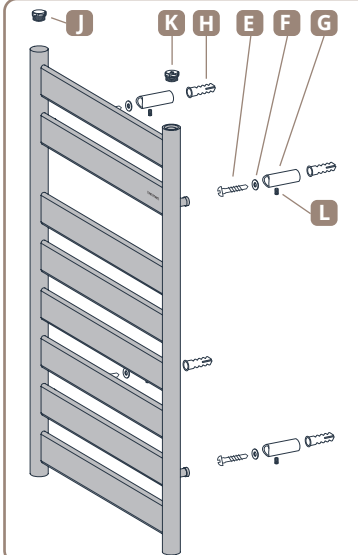
- 1- Adjust the height of your radiator by using a metric ruler.
- 2- Set the location of your radiator as desired, align with the ground by using a spirit level and mark the position of the wall mounting brackets.
- 3- Drill holes into the spots you have marked.
- 4- Nail the wall plugs (H) in the holes by using a hammer.



- 1- Place the fixing bracket (C) from the front of the radiator in the way shown in figure.
- 2- Place the slide mounting bracket (D) in the same position on the back of the radiator.
- 3- With the help of crosshead screw (B), tighten the two brackets with the screwdriver or the charged drill in the way shown in figure.
- 4- Place the bracket cap (A) by sliding it onto the fixing bracket (C).



- 1- Screw the mounting screw (E) through the washer (F) and screw the mounting brackets (G) into the wall using a screwdriver or a charged drill.
- 2- Insert the sliding brackets (D) into the wall mounting brackets (G). Insert the bracket screws (I) in the slots on wall mounting brackets (G), adjust the distance between the wall and your radiator then tighten the setscrews by using an allen key.



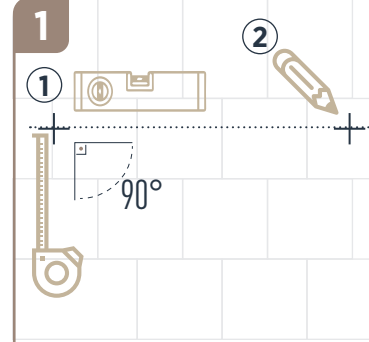
Installation information in this section
includes below products

LARA, LARA AD, METRO, METROPOLIS,
DORLION AD

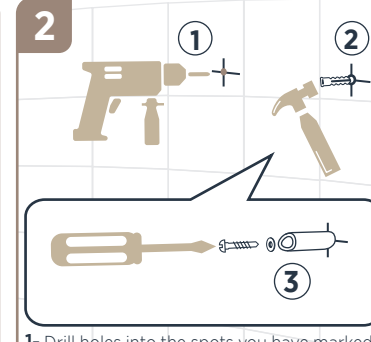
CONTENT OF MOUNTING SET

Wall Mounting Screw (x4) E	Washer (x4) F	Wall Mounting Bracket (x4) G
Wall Plug (x4) H	Blind Plug (x1) J	Air Vent (x1) K
Setscrew (x4) L		

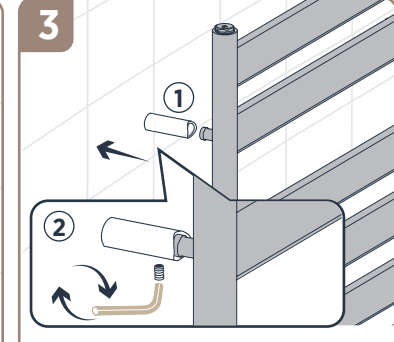
INSTALLATION



- 1- Adjust the height of your radiator by using a metric ruler.
- 2- Set the location of your radiator as desired, align with the ground by using a spirit level and mark the position of the wall mounting brackets.



- 1- Drill holes into the spots you have marked.
- 2- Nail the wall plugs (H) in the holes by using a hammer.
- 3- Screw the mounting screw (E) through the washer (F) and screw the mounting brackets (G) into the wall using a screwdriver or a charged drill.



- 1- Place your radiator into the wall mounting brackets (G).
- 2- Insert the setscrews (L) into the slots on the mounting brackets (G), adjust the distance between the wall and your radiator then tighten the setscrews by using an allen key.



WARNING

- Place your radiator at least 12.5 cm above the floor.
- Provide insulation by wrapping PTFE tape on the threads before installing the valves.
- Apply silicone seal fluid to all threaded parts containing o-rings.
- Connect your radiator to the pipework after following all the installation steps in the manual.
- After connecting to the pipework, do not forget to discharge the trapped air inside the radiator.

www.hammamradiator.com.tr

OSB 25. Cad. No:4 Eskişehir - Türkiye
Telefon : 0 222 236 90 11 Faks : 0 222 236 90 12



20.02.2020 Rev:03
R.EYS.KK.00137



R.EYS.KK.00137_installation guide_steel_english_hammam